

Storm prep tips from Chappy CERT

Chappaquiddick Community Emergency Response Team

Are you ready for the next big storm on Chappy? Like any island, Chappaquiddick is vulnerable to storms, sometimes severe. The impacts of a nor'easter or hurricane may last hours or days. There may be flooding, downed wires and trees, and power outages—meaning no pumped water or electric heat...no landlines, cell phones, or internet. Coast Guard storm regulations could suspend ferry services. Calebs Pond flooding could shut down nearby Chappy Road to the ferry. All would mean limited access to food, medications, and even emergency services. YIKES!!!

The good news is that Chappy CERT is here to help. Here are ten ways to prepare for a storm.



**CALL
911
FOR
EMERGENCIES**

Live Safe!

AS A STORM APPROACHES

1. **Fuel up or charge** your car and handhelds. **Check batteries** on flashlights, etc.
2. **Secure** doors, windows, outdoor furniture—and pets.
3. **Retrieve** your household EMERGENCY KIT* and portable radio. Tune into a local station for live updates. (See p. 2)

4. **Fill** big pots and bathtub with water.
5. **Check** in with neighbors.

IN ADVANCE OF A STORM

6. **Create** your own FAMILY EMERGENCY PLAN*, including animals.
7. **Organize** your EMERGENCY KIT* —including a 3+ day supply of water and ready-to-eat foods, plus meds and pet needs.

8. **Purchase** a solar, hand-crank, or battery-powered portable radio.
9. **Photocopy** your driver's license/photo ID, passport, medical and credit cards, home and auto insurance policies. Store in a water-tight Go Bag.

10. **Plan** to shelter in place. If you live, work, or vacation in a STORM TIDE PATHWAY (See p.2), plan for, and be prepared to, EVACUATE before a hurricane or tropical storm makes landfall. Know your routes to emergency shelter.

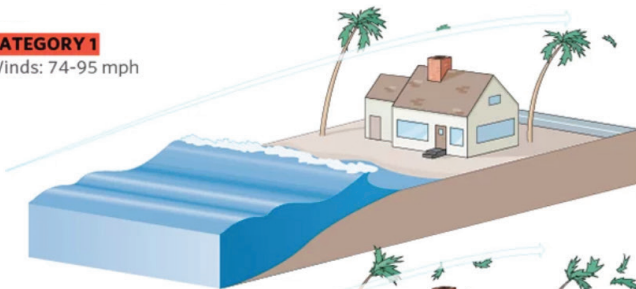
*For tips, lists and live storm update information including shelter availability go to
www.ChappyCERT.org

Know the risks!

Hurricane Intensity categories 1–5

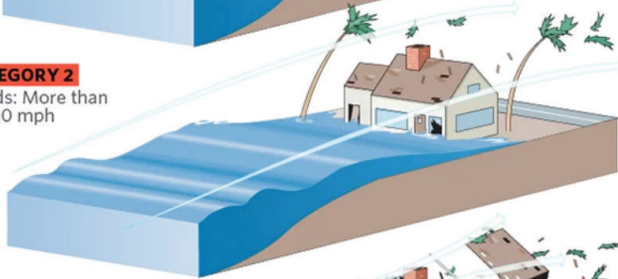
CATEGORY 1

Winds: 74-95 mph



CATEGORY 2

Winds: More than 96-110 mph



CATEGORY 3

Winds: 111-130 mph



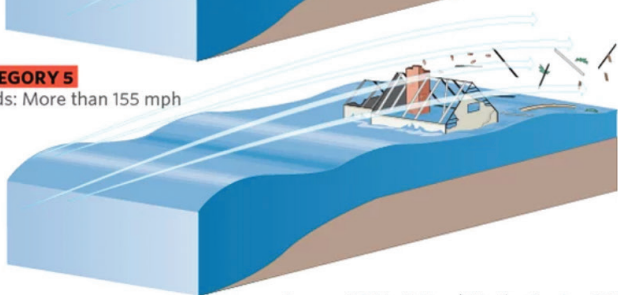
CATEGORY 4

Winds: 131-155 mph



CATEGORY 5

Winds: More than 155 mph



Sources: NOAA; National Weather Service, CEMA

Check out your Storm Tide Pathways

Select Edgartown here: <https://stormtides.org/>

Live Informed!

Live alerts for Martha's Vineyard
Stay alert. Public safety officials will post critical storm info—including evacuation mandates—via online and social media.

Martha's Vineyard Radio Stations

WMVY 88.7 FM WVVY 96.3 FM WCAI 90.1 FM

National Weather

www.weather.gov

<https://www.nhc.noaa.gov/>

Sign up for local alerts

Edgartown cell phone alerts:

Text Edgartown to (877) 550-8627

Dukes County cell phone alerts:

www.dukescounty.org

Woods Hole/Martha's Vineyard Steamship Authority
email alerts: www.SteamshipAuthority.com/email_lists

Check for Chappy Ferry status updates

www.chappyferry.com

Massachusetts government alerts

<https://www.mass.gov/alerts>

Twitter: @MassEMA

Facebook: <https://www.facebook.com/MassachusettsEMA>

Homeowner's handbook, emergency supplies, planning & safety tips

<https://seagrants.whoi.edu/wp-content/uploads/2020/07/MA-Homeowners-Handbook-2020-1.pdf>

<https://www.mass.gov/info-details/safety-tips-for-sheltering-in-place>

<https://www.mass.gov/info-details/hurricane-safety-tips>

<https://www.ready.gov/>

<https://www.fema.gov/>

Live Chappy Smart with Chappy CERT!

Chappy CERT is the Chappaquiddick Community Emergency Response Team, a neighbor-to-neighbor, community-based response to the needs for Emergency Preparedness on Chappy. Our goal is for every household to be properly equipped to shelter in place, and for residents and guests to know what to do in an emergency and/or evacuation. It is sponsored by the Chappaquiddick Island Association (CIA). Your membership helps support our efforts. For more, visit www.ChappyCERT.org

